

The Brigadoon Barker

The Newsletter of Brigadoon Service Dogs - We change lives one partnership at a time by offering a helping paw!

Spring 2016



4759 Mission Road, Bellingham, WA 98226
360-733-5388
info@brigadoondogs.org
www.brigadoondogs.org



Hello and Welcome!

Dear readers,

Welcome to the spring issue of The Brigadoon Barker! We have a jam packed issue for you with news, information, articles, jokes, photos, and more. We hope you enjoy!

It's been a busy past few months at Brigadoon and the coming season ahead promises to be even busier. We have many new puppies, over 25 dogs in training, 2 active prison programs, multiple upcoming events (see page 2!), an upcoming team training, and new projects underway.

To keep updated on all of Brigadoon's happenings, be sure to "like" and follow us on Facebook and Twitter and of course, read our seasonally newsletter ☺! You can also sign up for our email list on our website or at <http://brigadoondogs.us13.list-manage.com/subscribe?u=cb9817186be9de295ffe553fc&id=f1eb73cec7> . If you like what you see and you're interested in supporting Brigadoon or taking part in what we're up to, please consider making a donation or volunteering!

Now without further ado, The Brigadoon Barker.

Happy spring!



INSIDE THIS ISSUE

- 1 – Front Page**
- 2 – Brigadoon Events**
- 3 – “Tips for Air Travel” by TeamStyx**
- 4 – “Tips for Air Travel” by TeamStyx (continued)**
- 5 – “Matching Matters!” and dog announcement**
- 6 – “Matching Matters!” (continued)**
- 7 – “Apple’s Heart” and a thank you**
- 8 – “Service Dog FAQs” and merchandise announcement**
- 9 - Fun Page**

Newsletter written by Celeste Macevicius.

Come on Out and Support Brigadoon!

Now you can have a good time and support a great cause by coming out to one of the many events supporting Brigadoon in the Bellingham area.

- 🐕 **Brigadoon Beer, Blues, and Jazz Festival** - The Bellingham Beer Blues and Jazz Festival at North Bellingham Golf Course features up to 25 breweries, at least four bands and an appetizer buffet. This fundraising event benefits two human services nonprofit organizations, Brigadoon Service Dogs and Growing Veterans in Whatcom County. Some Whatcom County wineries will participate in this event! June 25th, 3:00PM-6:30PM
- 🐕 **International Wine Fest** – Brigadoon Service Dogs, in collaboration with Growing Veterans, is hosting Bellingham's first competitive annual Wine Festival, to take place on Saturday August 6th, 2016 from 6-10PM. Set at the beautiful Four Points Sheraton Hotel, community members will gather to drink a variety of Northwest wines from up to 35 from British Columbia, Washington, Idaho and Oregon. This year's guest country is Spain! 100% of proceeds benefit Brigadoon Service Dogs and Growing Veterans.
- 🐕 **Dynasty Cellars Wine Tasting** - \$55.00 Per Person | 20% Discount on all wine purchased during event! Includes: Four 3-ounce glasses of wine paired with appetizers prepared by Nick Moss, Executive Chef at 9Restaurant. Tentatively set for October 8th, 3:00PM – 5:00PM at Dynasty Cellars Tasting Room
- 🐕 **12th Annual Auction** – On October 15th at 5:30PM, Brigadoon will be hosting its annual auction for the 12th year at the Medallion Hotel in Arlington.

Happy Spring!

The spring(er) spaniels of Brigadoon wish you a happy spring!



Tips for Air Travel

By Team Styx¹

Those of us matched with a service dog from Brigadoon have already jumped one hurdle of airplane travel because our teams are accredited by Assistance Dogs International (ADI). If your plans include air travel, don't be discouraged. With patience, persistence, and planning, it can happen. Some travel has more paperwork than others so TeamStyx offers different examples:

Domestic travel (from the US mainland):

Service dogs qualify for expedited service from the Hawai'i Department of Agriculture (HDoA).

Advance documentation is required (proof of past two rabies vaccines, for example, and microchip implant number), but some fees are waived. The HDoA specifically lists ADI training as one basis to pre-qualify for faster service. You still need to meet strict rules (the process can take several weeks) but this is much shorter than the time required to import a pet. You can apply for "direct release" if it helps to fly non-stop to a neighbor island and bypass Honolulu, but extra fees apply. For me, flying direct from Oregon to Maui made our "bucket list" trip possible. Indispensable allies included Brigadoon, our local veterinarian, and the West Maui Animal Clinic (WMAC). Brigadoon provided a signed statement about TeamStyx on official letterhead and with that letter many doors opened. Sometimes I had to knock two or three times, but it worked! Your hometown veterinarian is a key partner in organizing the blood test and preparing the health certificate that airline staff will want to see before boarding and that an approved veterinarian (like WMAC) must collect when you deplane. The health certificate must be dated within 10 days before you depart the mainland. I used a paper calendar, counting backward from our arrival date, and kept good notes, so each piece of required paperwork got submitted by the different deadlines. It can be easy to get discouraged and confused by the long process but it helps to remember at least three things: 1) the rules are in place to prevent rabies from entering the Hawaiian Islands, not to make life harder, 2) our ADI-accredited service dogs are recognized and welcomed by HDoA for their superior training, and 3) the destination is amazing. During our visit, TeamStyx was greeted respectfully and encouragingly in our hotel, on the beach boardwalk, at outdoor concerts, and in restaurants. Truly, a spirit of "aloha."



Styx poses in the arrival hall at Kahului airport, Maui. The accreditation of Brigadoon by ADI helps expedite paperwork needed to visit Hawai'i from the mainland.²

Domestic travel (in the continental US): Service dogs fly in the cabin with you and must fit in the space provided at your feet. TeamStyx is tall so we need a bulkhead row, but it cannot be an exit row. I've learned it takes a lot of advance planning and time on the phone to get the seat assignment I need (and they want me to have so that the crew and other passengers are not inconvenienced). Our first flights were tough because navigating an airport is hard to begin with (Check-in! Security! Crowds!). Then on top of that airline staff at the gate may not communicate with staff at check-in, so the same questions pop up again.. Seats can be reassigned at the gate so I've learned to be early to help avoid problems. Airports are filled with people who are obstacles to team safety and sanity, so I try to be rested, polite but firm, and use easy luggage. TeamStyx has flown for medical appointments, work, and family so we are gaining experience. If something goes badly (well-intentioned help that isn't, unkind people) we stop, get to a safe spot, and focus on the team.

Tips for Air Travel

Continued from page 3

International travel: Service dogs fly in the cabin with you on international flights the same as they do on domestic routes. One key difference from domestic air travel to Hawai'i is that the health certificate required is an international one, prepared by your veterinarian and signed by the USDA office in your region. The Pacific Northwest USDA vet services are in Tumwater, WA. TeamStyx has family in Germany, so our goal was entering the European Union. Different schedules and requirements vary according to the country (or countries) you intend to visit and your airline may add other requirements. Staff at our local veterinarian in the Columbia Gorge helped find materials on the internet demonstrating how to complete the multi-page, multi-copy certificate, scheduled the health exam, and taught me how to send materials by overnight service to Tumwater. Once that was accomplished there was nothing to do but wait anxiously for the USDA to sign and return everything so we could board the plane. It worked! We visited family, toured a few new cities, and entered a few shops. Strangers were respectful and did not interrupt us on the street, but we were unwelcome in restaurants. Before departure I'd contacted an ADI-accredited organization in Germany and that helped me navigate some of the unfamiliar practices and attitudes we encountered.

Flying isn't easy but it is sometimes necessary or desirable, and being a Brigadoon Team helps a lot. Good luck and safe travels.



Styx sits behind glass on a viewing platform in a tower in Cologne, Germany.²

Internet resources for more information:

- Assistance Dogs International <http://www.assistedogsinternational.org/>
- Hawaii Department of Agriculture see <http://hdoa.hawaii.gov/ai/ags/animal-quarantine-information-page/guide-service-dogs-entering-hawaii/> and for direct island release program see <http://hdoa.hawaii.gov/ai/files/2013/01/Checklist-for-NII-01-2012.pdf>
<http://hdoa.hawaii.gov/ai/files/2013/01/Checklist-for-NII-01-2012.pdf>
- USDA <https://www.aphis.usda.gov/aphis/ourfocus/animalhealth/export/iregs-for-animal-exports>

¹**About Team Styx:** Styx and Susan graduated from Brigadoon in May, 2015. Styx works as Susan's counterbalance and helps her stand.

²All photo credits to R. Hummel

Recent Research Concurs with Brigadoon's Philosophy: Matching Matters!



A young boy participates in the matching process at Brigadoon

Chantelle Whelan, a researcher from the University of Nottingham, recently published findings from her PhD entitled "Causes and Impact of Premature Retirement of Guide Dogs." Her research looks at why so many guide dogs are retired within their first year of service and what impact it has on the handler.

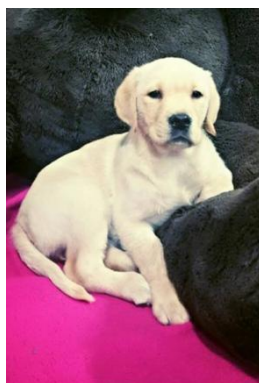
The research has shone a light on the often underappreciated complexities of guide dog (and service dog) partnerships. It found that, contrary to popular belief, behavioural issues were not the singular most common cause of failed partnerships. Instead, it was a variety of factors such as the dog's temperament, the handler's lifestyle, the handler's previous experiences, and other influencers on the partnership's *relationship* that really mattered. In addition, the research also found that the premature retirement of a guide dog is a very difficult experience for the handler.

This research reaffirms Brigadoon's strong belief in the power of the bond between dog and handler. Unlike most service dog schools, Brigadoon does not serve clients on a "first come, first serve" basis. Instead, clients are matched with dogs on the basis of temperament and lifestyle compatibility, the needs and abilities of each partner, and the connection between the two.

Continued on page 6

New Brigadoon Dogs

Brigadoon has welcomed aboard several new dogs in-training over the winter. Say hello to these future service pups!



To see Brigadoon's most recent additions, head over to the Brigadoon Facebook page!



Andy, Apache, Apple are 3 m.o. $\frac{3}{4}$ lab $\frac{1}{4}$ golden retrievers; Glee is a 4 m.o. yellow lab; Dan, Forrest, and Jasper are 5 m.o. lab mixes; Sam is a 15 m.o. husky X shepherd; Charlie is an cream labradoodle; Rex is a 3 $\frac{1}{2}$ m.o. shepherd mix; and Etta is a 11 week black lab.



A well matched team becoming even more bonded during team training



A successfully matched team out exploring the world together

Recent Research Concurs with Brigadoon's Philosophy: Matching Matters!

Continued from page 4

Brigadoon's matching process starts with the application. The client fills out a form saying which traits they would like and which traits they wouldn't like in their dog, as well as detailed information about their own temperament, lifestyle, and needs. In the interview and during the home visit, this information is discussed further and expanded upon.

Once a client is on the wait list, Brigadoon begins to keep an eye out for dogs that might suit that particular client. When a potential match is found, the client returns to Brigadoon to meet with the dog. The person spends time petting, playing, and interacting with the dog while Brigadoon trainers observe to see how the two are doing. At that time, the client may also meet with several other dogs at the school to compare and contrast how they like and work with different types of dogs.

When a match is made, the client is notified. Team training, the two week period where the team learns to work together before taking a public access test to graduate, is set up. For some, team training might occur a month after being matched, while for others it may still be a year or more before they graduate with their dog. It all depends on the age and level of training the dog has reached. Some clients, especially children, will have sleepovers with their future service dog at this point to start the bonding process.

During team training, the team not only learns how to work together, but they also spend time bonding. In fact, for the first couple days, they spend every minute tethered together—except when the handler is in the shower! When the team graduates, their bond is already very strong. Over the next six months, working on that bond is the team's top priority. By the time the team has been together for a year, they are an inseparable pair.

Brigadoon's matching process means that clients receive a dog that not only be an aid but also a friend. As the recent research has found and Brigadoon knows from experience, the better the match, the better the likelihood a team will succeed!

Apple's Heart



Apple, otherwise known as "orange collared puppy," was the runt of Desiree's litter. She is a Brigadoon puppy in training and she is doing very well in her training and socialization. One day, she could become an excellent service dog.

Unfortunately, Apple was born with a congenital heart defect known as Patent Ductus Arteriosus (PDA).

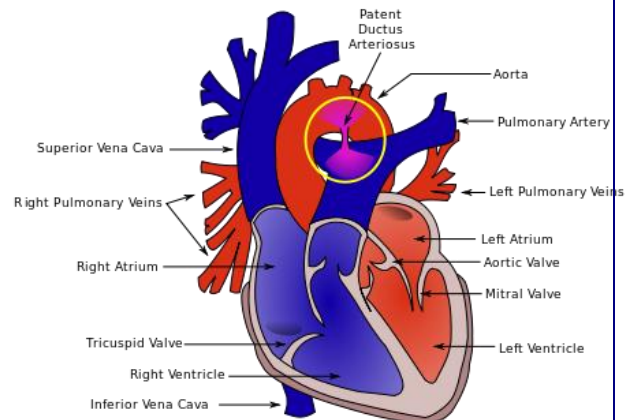
PDA is a serious condition that threatens to kill Apple within her first year of life. Luckily, it is also very treatable with heart surgery. Apple will, of course, undergo the surgery which will allow her to grow up and not only live a normal life, but an extraordinary service dog life! The surgery is, however, very expensive. It is estimated to cost \$2500-5000.

UPDATE

Happily, as of February, Brigadoon succeeded in meeting the cost of the surgery! Thanks to generous supporters, Apple went into surgery on February 26th. Although the surgeon could not completely close the valve, scar tissue ended up closing the remainder of the hole, making the surgery a success! Apple is getting better with each passing day and is expected to make a full recovery.

Thank you to everyone who donated to Apple's surgical fund. Every donation has helped make Apple better so that she can make a client's life better.

"He is your friend, your partner, your defender, your dog. You are his life, his love, his leader. He will be yours, faithful and true, to the last beat of his heart. You owe it to him to be worthy of such devotion." - Unknown



THANK YOU

Over the past several months, the support that we have received has been amazing. Whether you have written an encouraging comment on the Facebook page, spread the word about Brigadoon, attended an event, volunteered a bit of your time, or made a donation, we so appreciate it.



Shannon Brackett love love love this!!!

Unlike · Reply · 1 · 27 January at 21:00



Rochelle Sedgwick Klinnert Love this. Zola had a brief spot in the video

Unlike · Reply · 1 · 27 January at 22:11 · Edited



Vicki Russell Woohoo! Nice job Brigadoon 🐾

Unlike · Reply · 1 · 27 January at 22:11



Service Dog FAQs

1. Do service dogs ever get to “just be dogs?”

Yes! When a service dog is not working, they enjoy playing fetch, chewing on bully sticks, cuddling on the couch, and doing all sorts of regular dog things!

2. Can I pet your dog? Why not?

Sorry, no. When service dogs are working, they need to stay focused on their handler. Petting (and talking to, calling over, offering food, or reaching your hand out) distract the dog.

3. How do I make my dog a service dog?

First of all, you must have a disabling condition in order to be eligible for a service dog. Secondly, your dog has to undergo extensive training in order to be a service dog. This training typically takes two years. Finally, that training and socialization is costly, time consuming, and difficult – most service dogs start from puppyhood and are trained by professionals who invest thousands of dollars and hundreds of hours into the dog. So before you consider the route of making your dog a service dog, carefully think over these considerations! If you still want to train your own dog, steps would include training your dog in basic obedience, putting it through intensive socialization, getting a thorough veterinarian exam, working to pass a Canine Good Citizen Test, and then working on task training and public access practice.

For Sale!

Have you seen the cool shirts Brigadoon Weekend Waggers have been wearing? Or the baseball caps some volunteers have had on? Well you too can join in this fun way of supporting Brigadoon.



Spotted at Happy Pooch Styling & Spa: A Brigadoon T-shirt!

You can buy:

- 🐾 Baseball caps
- 🐾 T-Shirts
- 🐾 License plate frames
- 🐾 Coffee mugs



License plate holder with the website on the top and “I support Brigadoon Service Dogs” along the bottom

It's a way of supporting Brigadoon that keeps on helping: your donation goes into keeping Brigadoon running and flourishing while your awesome new merch gets word out about Brigadoon!

To get your own hat, shirt, license plate frame, and coffee mug, email info@brigadoondogs.org or call us at 360-733-5388

Fun Page!

Dog Breed Humour

What's more valuable than a golden retriever?
A gold retriever!

What did Lassie say when people asked what breed he was?
A "Ruff" coated collie

What's the best dog mix for Valentine's Day?
A golden X chocolate retriever

What type of dog is the most helpful for teachers?
Pointers!

Word Search

Find some of the items Brigadoon needs in this word search! For a more detailed version of Brigadoon's wish list, go to their website, or follow this link: <http://www.brigadoondogs.org/#!/shop/ckml>

Z R N C J S B C D U I I G N U J C R G I N S P R K O N N J Z
F V B G I W P E Z V Y F P G I R X E M I F I W W O F Y Y B A
S Y O D V K T M B O F Q J N P S P T S Q F C I E R Y L F Q D
I Y A V C E C D A K U Q T V B Y T T E A E T V Z W E A L N F
K H S B R C S C B T O Q R S Y E U U N F N Q C R B I B H P R
M H R G T R E A T S S N O Q N X J B H T W S T A C D O N P T
S L E J H C T K I W R E G V U U J T O H J S O K R Z N J L N
L N S N A D N G Y Z U A G S E Z T U I U Y D X E Q D E L Z C
T L U S C U S Z L X X Y H A K N D N A R P L R D I I S U S A
B I H C D J A R R D V D X R T R E A E Y Q H E D Y F E K T D
R E S Q L I B K O S Z S U C Z S O E F G Q P E D T B L W Q P
W N H F D G M O Y Y O C C F R K O P P O S I O X X U U I Q Q
C S S Q O V L C K U E B L J X A I P L L L A J J V U T P N P
C I L N R Q J O M X V V B I Q O O T E K Z G I J P E D E H Z
U Q E F H D B S P P A O S H S I D W W B D C G E U M V S Y X
Z F W N F N M D F V T H H H Q U O O Q G F R J N C W I T L T
E W O Z R H F M Z G A B D D M T M W K Q O J Z W I E V W O H
F T T Y G G A G K T V C Y A R U F W S M E M W K P D V B H R
P B N O F L V N C T D W H E S A M H R U J A L Q P J D J E M
Q K X U G X P R D B X G P T H N B U C E C D Z D T S W E A P
W J Q N D Y F B U K Y A D D Q L Z T V B B C K T S F X S B R
B M A Y P Y R A M F P R G V O M H K R V K W K Q E H F D D D
P L J H V C K F C G I V R P C B M C K C S L I Q D D R O A T
E N V E L O P E S D P Z F E M L Q U J W F P I Y M L C C T S
I H S O V Y N V C J A M E D Y I V W Z V T H M F D N S A Q H
N H O I Y A W A Y R Y Z U H A P C O D M P Q I Y J Z L K C Y
R Q I T R E E E V B Y D N I L V A L M W Y X P F Y C R A E P
N I S T C V V U W C N M V E O X E P Z O O M M Z V I E E I W
P S G T A J K D U U N X F N L B K G U W Q V K F H L A Q H W
C E M I A W K R M A O V Q V O R T B M H E B P R B V X C N L

BEDDING
BLEACH
CASH
DETERGENT
DISH SOAP

ENVELOPES
GIFTCARDS
KONGS
NYLABONES
PAPER TOWELS

PEANUT BUTTER
POSTAGE STAMPS
TOWELS
TREATS
WIPES